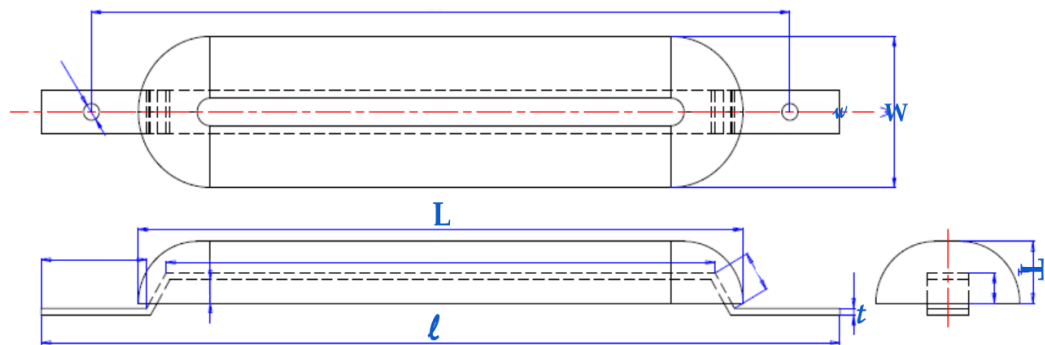


# Hull Anodes

Zinc Anodes are recommended for Sacrificial Cathodic Protection applications in soils with resistivities below 1000 ohm-cm. The right anode dimensions and in conjunction with a very good hull coating, they can provide sufficient output to protect steel in higher resistivity environments such as tidal areas and brackish to fresh water estuaries. Zinc Anodes conform to the ASTM-B-418, type I alloy standard and MIL-A-18001-K.

- ◆ **Hull Anodes**
- ◆ Flash Mounted Anodes
- ◆ Stand-off Anodes
- ◆ Segmented Bracelet Anodes

## Type 1



Type	Anode Dimensions (L x W x T) (mm)	Core Dimensions (l x w x t) (mm)	Net Weight (kg)	Gross Weight (kg)
ZS4.1	305 x 75 x 38	425 x 30 x 4	4.1	4.5
ZS6.4	305 x 90 x 45	425 x 30 x 4	6.4	6.8
ZS8.1	305 x 152 x 32	425 x 30 x 4	8.1	8.5
ZS9.3	305 x 152 x 35	425 x 30 x 4	9.3	9.7
ZS10	305 x 152 x 38	425 x 30 x 4	10.0	10.4
ZS14	456 x 102 x 53	625 x 32 x 8	14.0	15.0
ZS17	585 x 139 x 37	750 x 38 x 6	17.0	18.3
ZS25	585 x 142 x 53	750 x 38 x 6	25.0	26.3
ZS35	585 x 149 x 69	750 x 38 x 6	35.0	36.0

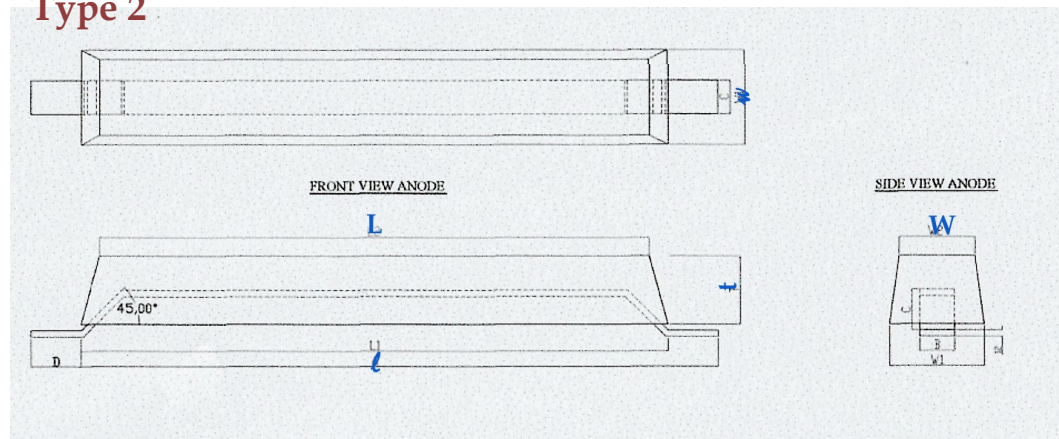


# Hull Anodes

Zinc Anodes are recommended for Sacrificial Cathodic Protection applications in soils with resistivities below 1000 ohm-cm. The right anode dimensions and in conjunction with a very good hull coating, they can provide sufficient output to protect steel in higher resistivity environments such as tidal areas and brackish to fresh water estuaries. Zinc Anodes conform to the ASTM-B-418, type I alloy standard and MIL-A-18001-K.

- ◆ **Hull Anodes**
- ◆ Flash Mounted Anodes
- ◆ Stand-off Anodes
- ◆ Segmented Bracelet Anodes

## Type 2



Type	Anode Dimensions (L x W x T) (mm)	Core Dimensions (l x w x t) (mm)	Net Weight (kg)	Gross Weight (kg)
ZH2.6	200 x 100 x 20	300 x 39 x 3	2.6	3.0
ZH3.8	200 x 100 x 30	300 x 38 x 3	3.8	4.2
ZH5.75	300 x 150 x 25	270 x 30 x 4	5.75	6.5
ZH7.25	300 x 150 x 25	270 x 30 x 4	7.25	8.0
ZH8.75	300 x 150 x 30	270 x 30 x 4	8.75	9.5
ZH11.25	300 x 150 x 40	270 x 30 x 4	11.25	12.0
ZH13.85	300 x 150 x 50	270 x 30 x 4	13.85	14.60

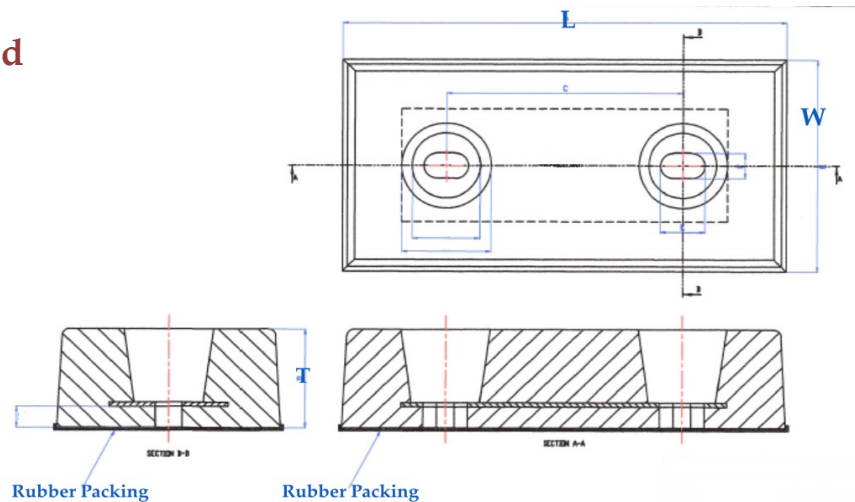


# Hull Anodes

Zinc Anodes are recommended for Sacrificial Cathodic Protection applications in soils with resistivities below 1000 ohm-cm. The right anode dimensions and in conjunction with a very good hull coating, they can provide sufficient output to protect steel in higher resistivity environments such as tidal areas and brackish to fresh water estuaries. Zinc Anodes conform to the ASTM-B-418, type I alloy standard and MIL-A-18001-K.

- ◆ **Hull Anodes**
- ◆ Flash Mounted Anodes
- ◆ Stand-off Anodes
- ◆ Segmented Bracelet Anodes

## Bolted



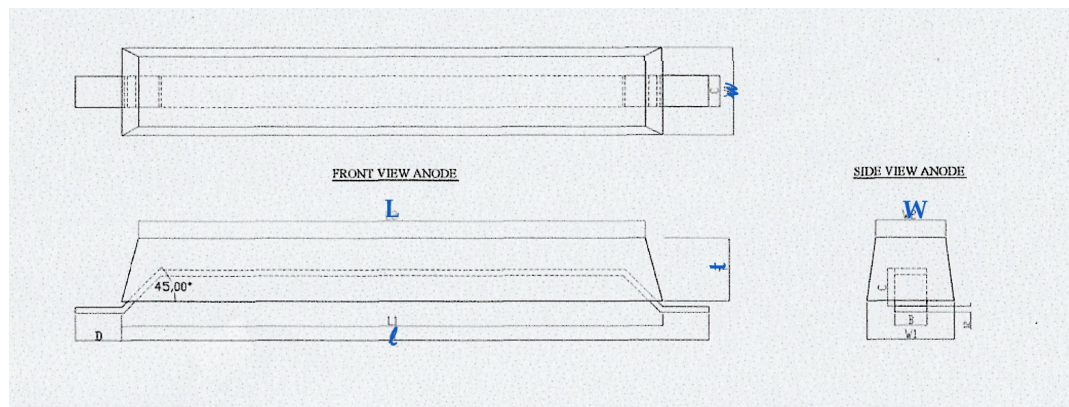
Type	Anode Dimensions (L x W x T) (mm)	Net Weight (kg)	Gross Weight (kg)
ZA2.2	200 x 100 x 20	2.2	2.5
ZA3.3	200 x 100 x 30	3.3	3.6
ZA3.9	200 x 100 x 40	3.9	4.3
ZA6.9	300 x 150 x 25	6.9	7.3
ZA7.9	300 x 150 x 30	7.9	8.3
ZA10.6	300 x 150 x 40	10.6	11.0
ZA13.4	300 x 150 x 50	13.40	13.80



# Flash Mounted Anodes

Zinc Anodes are recommended for Sacrificial Cathodic Protection applications in soils with resistivities below 1000 ohm-cm. The right anode dimensions and in conjunction with a very good hull coating, they can provide sufficient output to protect steel in higher resistivity environments such as tidal areas and brackish to fresh water estuaries. Zinc Anodes conform to the ASTM-B-418, type I alloy standard and MIL-A-18001-K.

- ◆ Hull Anodes
- ◆ **Flash Mounted Anodes**
- ◆ Stand-off Anodes
- ◆ Segmented Bracelet Anodes



Type	L	W	H	l	w	h	Net Weight (kg)	Gross Weight (kg)
ZB65	915	102	102	6	50	—	65.0	68.0
ZB118	730	157	150	12	50	—	118.0	123.0
ZB162	475	193	254	15	75	—	162.0	169.0
ZB184	1525	143	127	10	150	750	184.0	191.0

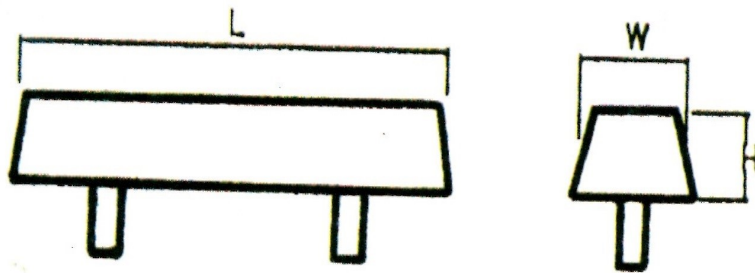


Jln Pulwonokromo 180A, 60243, Surabaya, East Java, Indonesia.  
 Telp: (+6231) 828 0939. Fax: (+6231) 828 8629  
 Email: [nobelindonesia@rocketmail.com](mailto:nobelindonesia@rocketmail.com)  
 Website: [ptnobelindonesia.com](http://ptnobelindonesia.com)

# Stand-off Anodes

Zinc Anodes are recommended for Sacrificial Cathodic Protection applications in soils with resistivities below 1000 ohm-cm. The right anode dimensions and in conjunction with a very good hull coating, they can provide sufficient output to protect steel in higher resistivity environments such as tidal areas and brackish to fresh water estuaries. Zinc Anodes conform to the ASTM-B-418, type I alloy standard and MIL-A-18001-K.

- ◆ Hull Anodes
- ◆ Flash Mounted Anodes
- ◆ **Stand-off Anodes**
- ◆ Segmented Bracelet Anodes



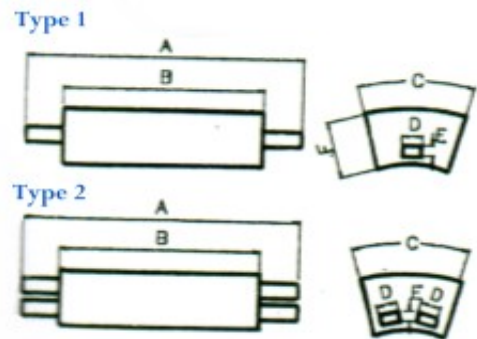
Type	L	W	H	l	w	h	Net Weight (kg)	Gross Weight (kg)
ZT355	660	180	160	2" Sch80	—	—	135.0	144.0
ZT162	475	193	254	60	15	—	162.0	169.0
ZT330	1550	180	170	100	20	—	330.0	338.0
ZT500	1100	275	275	4" Sch80	—	—	500.0	542.0



# Segmented Bracelet Anodes

Zinc Anodes are recommended for Sacrificial Cathodic Protection applications in soils with resistivities below 1000 ohm-cm. The right anode dimensions and in conjunction with a very good hull coating, they can provide sufficient output to protect steel in higher resistivity environments such as tidal areas and brackish to fresh water estuaries. Zinc Anodes conform to the ASTM-B-418, type I alloy standard and MIL-A-18001-K.

- ◆ Hull Anodes
- ◆ Flash Mounted Anodes
- ◆ Stand-off Anodes
- ◆ **Segmented Bracelet Anodes**



Anode No.	Type No.	d	A	B	C	D	E	F	Net Weight (kg)	Gross Weight (kg)
ZG10	1	—	635	380	117	40	6	33	10.0	11.0
ZG17	1	—	365	380	117	40	6	53	17.0	18.0
ZG20	1	—	635	380	117	40	6	64	20.0	21.0
ZG20.75	2	465	405	265	178	25	6	65	20.75	21.75
ZG23	1	—	635	380	117	40	6	74	23.0	24.0
ZG25	1	—	635	380	117	40	6	79	25.0	27.0
ZG25	1	515	570	420	211	50	6	45	25.0	26.0
ZG35	2	624	580	360	254	25	6	60	35.0	36.4
ZG35	2	624	388	168	295	25	6	120	25.0	36.4
ZG35	2	624	439	219	280	25	6	102	35.0	36.4
ZG37	1	—	635	380	117	40	6	113	37.0	38.0
ZG39	1	—	635	380	117	40	6	123	39.0	40.0
ZG44	1	—	635	380	117	40	6	139	44.0	46.0

