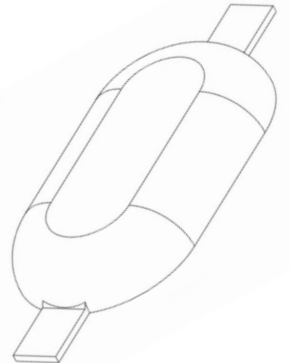
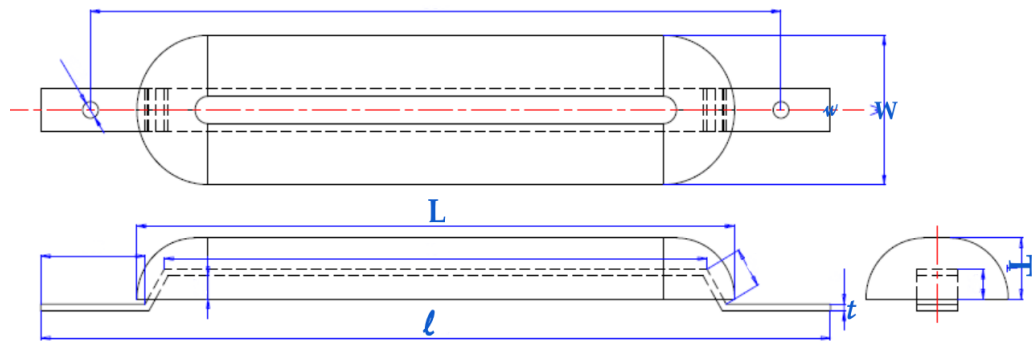


Hull Anodes

Aluminium Anodes are generally used in salt water, where the resistivity is generally lower. Typical uses include applications such as ship hulls, salt water ballast tanks, offshore structures, steel wharf piling and submerged (offshore) pipelines. Aluminium Anodes conform to the MIL-A-24779 (SH) standard. We can be manufactured with a wide variety of core configurations, to accommodate different anode specifications and applications. All product are tested and inspected prior to shipping.



- ◆ **Hull Anodes**
- ◆ Tank Anodes
- ◆ Flash Mounted Anodes
- ◆ Segmented Bracelet Anodes
- ◆ Half Shell Type Bracelet Anodes
- ◆ Pipe Insert Anodes
- ◆ Stand-off Anodes



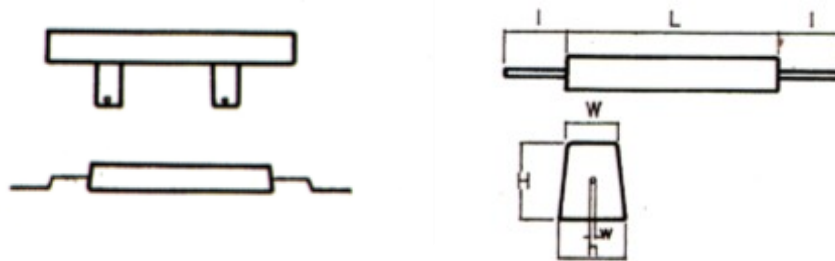
Type	Anodes (mm)			Core (mm)			Net Weight (kg)	Gross Weight (kg)
	L	W	H	l	w	h		
AL1.2	200	95	30	300	25	6	1.2	1.4
AL2.6	270	150	30	350	25	6	2.6	3.2
AL4.5	395	150	30	530	25	6	4.5	5.2
AL8.6	550	127	50	650	40	6	8.6	9.8
AL10.1	535	130	65	650	40	6	10.1	11.6
AL12.6	535	130	75	625	40	6	12.6	14.1
AL16.5	550	130	96	650	40	6	16.5	18.0
AL14.1	915	130	50	1050	50	6	14.1	16.0
AL21	915	130	75	1050	50	6	21.0	24.0
AL30	920	130	104	1050	50	6	30.0	33.0



Tank Anodes

Aluminium Anodes are generally used in salt water, where the resistivity is generally lower. Typical uses include applications such as ship hulls, salt water ballast tanks, offshore structures, steel wharf piling and submerged (offshore) pipelines. Aluminium Anodes conform to the MIL-A-24779 (SH) standard. We can be manufactured with a wide variety of core configurations, to accommodate different anode specifications and applications. All product are tested and inspected prior to shipping.

- ◆ Hull Anodes
- ◆ **Tank Anodes**
- ◆ Flash Mounted Anodes
- ◆ Segmented Bracelet Anodes
- ◆ Half Shell Type Bracelet Anodes
- ◆ Pipe Insert Anodes
- ◆ Stand-off Anodes



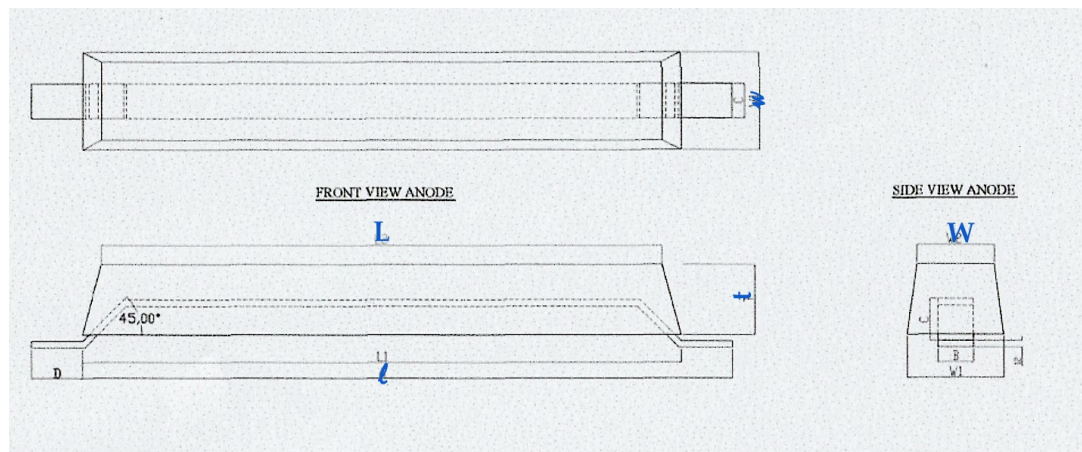
Type	Anodes			Core			Net Weight (kg)	Gross Weight (kg)
	L	W	H	l	w	h		
ALH4.1	760	50	40	205	50	13	4.1	5.4
ALH8.3	1525	50	40	205	50	13	8.3	10.3
ALH3.3	305	75	50	305	65	13	3.3	3.8
ALH7.1	610	75	50	610	65	13	7.1	8.1
ALH14.5	1270	75	50	230	65	13	14.5	16.3
ALH17.3	1525	75	50	230	65	13	17.3	19.3
ALH5.8	305	95	75	230	85	13	5.8	6.3
ALH12.2	600	95	75	230	85	13	12.2	13.2
ALH20.2	1005	95	75	230	85	13	20.2	21.7
ALH25.4	160	95	75	230	85	13	25.4	27.2
ALH30.9	1525	95	75	230	85	13	30.9	32.9



Flash Mounted Anodes

Aluminium Anodes are generally used in salt water, where the resistivity is generally lower. Typical uses include applications such as ship hulls, salt water ballast tanks, offshore structures, steel wharf piling and submerged (offshore) pipelines. Aluminium Anodes conform to the MIL-A-24779 (SH) standard. We can be manufactured with a wide variety of core configurations, to accommodate different anode specifications and applications. All product are tested and inspected prior to shipping.

- ◆ Hull Anodes
- ◆ Tank Anodes
- ◆ **Flash Mounted Anodes**
- ◆ Segmented Bracelet Anodes
- ◆ Half Shell Type Bracelet Anodes
- ◆ Pipe Insert Anodes
- ◆ Stand-off Anodes



Type	Anodes			Core			Net Weight (kg)	Gross Weight (kg)
	L	W	H	l	w	h		
AB26.5	765	112	115	75	40	12	26.5	30.0
AB31.2	738	112	115	75	40	12	31.2	34.0
AB41	1165	112	115	75	40	12	41.0	45.0
AB43	760	112	115	100	40	12	43.0	51.0
AB50	500	112	115	115	50	10	50.0	53.0
AB105	2440	165	1560	370	60	10	105.0	118.0
AB147	2275	178	100	200	65	10	147.0	163.0

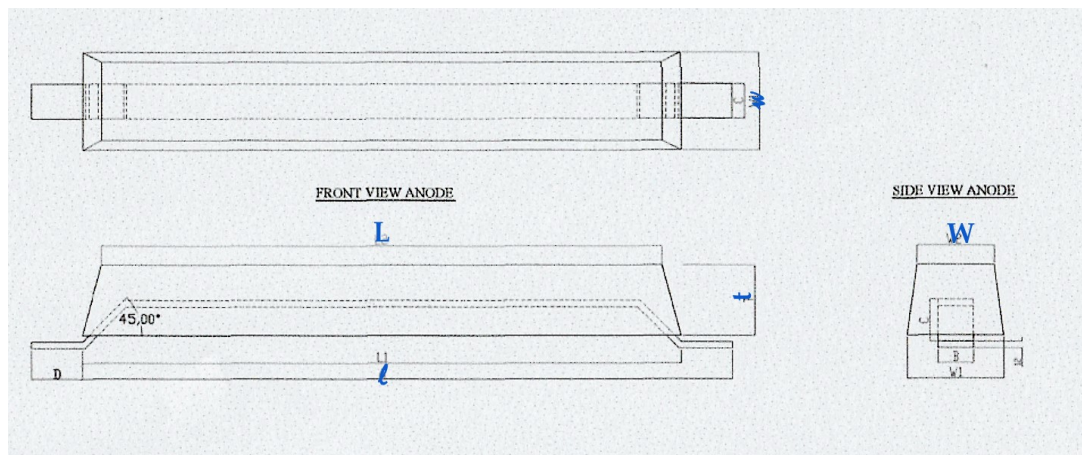


Jln Pulwonokromo 180A, 60243, Surabaya, East Java, Indonesia.
 Telp: (+6231) 828 0939. Fax: (+6231) 828 8629
 Email: nobelindonesia@rocketmail.com
 Website: ptnobelindonesia.com

Flash Mounted Anodes

Aluminium Anodes are generally used in salt water, where the resistivity is generally lower. Typical uses include applications such as ship hulls, salt water ballast tanks, offshore structures, steel wharf piling and submerged (offshore) pipelines. Aluminium Anodes conform to the MIL-A-24779 (SH) standard. We can be manufactured with a wide variety of core configurations, to accommodate different anode specifications and applications. All product are tested and inspected prior to shipping.

- ◆ Hull Anodes
- ◆ Tank Anodes
- ◆ **Flash Mounted Anodes**
- ◆ Segmented Bracelet Anodes
- ◆ Half Shell Type Bracelet Anodes
- ◆ Pipe Insert Anodes
- ◆ Stand-off Anodes



Type	Anodes			Core				Net Weight (kg)	Gross Weight (kg)
	L	W	H	l	w	h	g		
AF37	1867	100	17	—	50	6	1475	37	39.4
AF53	1525	112	100	75	75	12	—	53	60.5
AF65	1828	200	75	—	40	6	1270	65	71.2
AF162	2440	162	145	—	60	10	1230	152	166.0

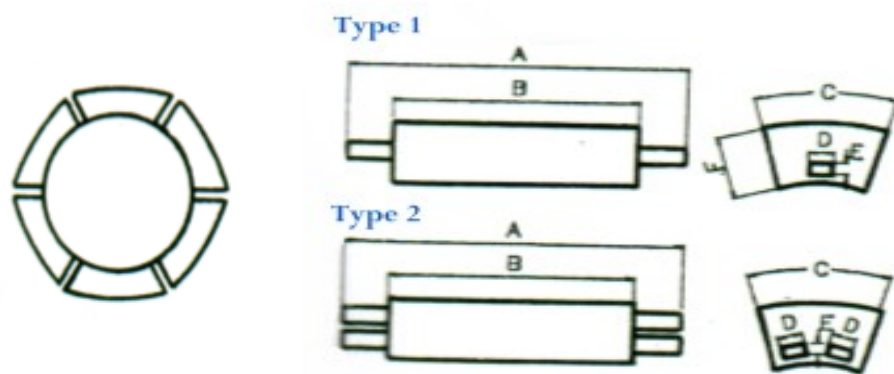


Jln Pulwonokromo 180A, 60243, Surabaya, East Java, Indonesia.
 Telp: (+6231) 828 0939. Fax: (+6231) 828 8629
 Email: nobelindonesia@rocketmail.com
 Website: ptnobelindonesia.com

Segmented Bracelet Anodes

Aluminium Anodes are generally used in salt water, where the resistivity is generally lower. Typical uses include applications such as ship hulls, salt water ballast tanks, offshore structures, steel wharf piling and submerged (offshore) pipelines. Aluminium Anodes conform to the MIL-A-24779 (SH) standard. We can be manufactured with a wide variety of core configurations, to accommodate different anode specifications and applications. All product are tested and inspected prior to shipping.

- ◆ Hull Anodes
- ◆ Tank Anodes
- ◆ Flash Mounted Anodes
- ◆ **Segmented Bracelet Anodes**
- ◆ Half Shell Type Bracelet Anodes
- ◆ Pipe Insert Anodes
- ◆ Stand-off Anodes



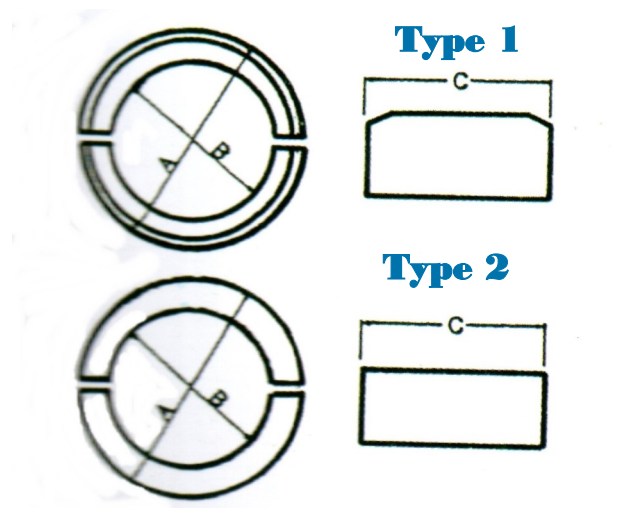
Anode No.	Type No.	d	A	B	C	D	E	F	Net Weight (kg)	Gross Weight (kg)
AG3.8	1	—	635	380	117	40	6	33	3.8	4.8
AG6.5	1	—	635	380	117	40	6	53	6.5	7.5
AG7.7	1	—	635	380	117	40	6	64	7.7	8.7
AG8	2	465	405	265	178	25	6	65	8.0	9.0
AG9	1	—	635	380	117	40	6	74	9.0	10.0
AG9.6	1	515	570	420	211	50	6	45	9.6	10.6
AG13.5	2	624	580	360	254	25	6	60	13.5	14.5
AG13.5	2	624	388	168	295	25	6	120	13.5	14.5
AG14.3	1	—	635	380	117	40	6	113	14.3	15.6
AG15	1	—	635	380	117	40	6	123	15.0	16.0
AG17	1	—	635	380	117	40	6	139	17.0	18.0



Half Shell Bracelet Anodes

Aluminium Anodes are generally used in salt water, where the resistivity is generally lower. Typical uses include applications such as ship hulls, salt water ballast tanks, offshore structures, steel wharf piling and submerged (offshore) pipelines. Aluminium Anodes conform to the MIL-A-24779 (SH) standard. We can be manufactured with a wide variety of core configurations, to accommodate different anode specifications and applications. All product are tested and inspected prior to shipping.

- ◆ Hull Anodes
- ◆ Tank Anodes
- ◆ Flash Mounted Anodes
- ◆ Segmented Bracelet Anodes
- ◆ **Half Shell Bracelet Anodes**
- ◆ Pipe Insert Anodes
- ◆ Stand-off Anodes



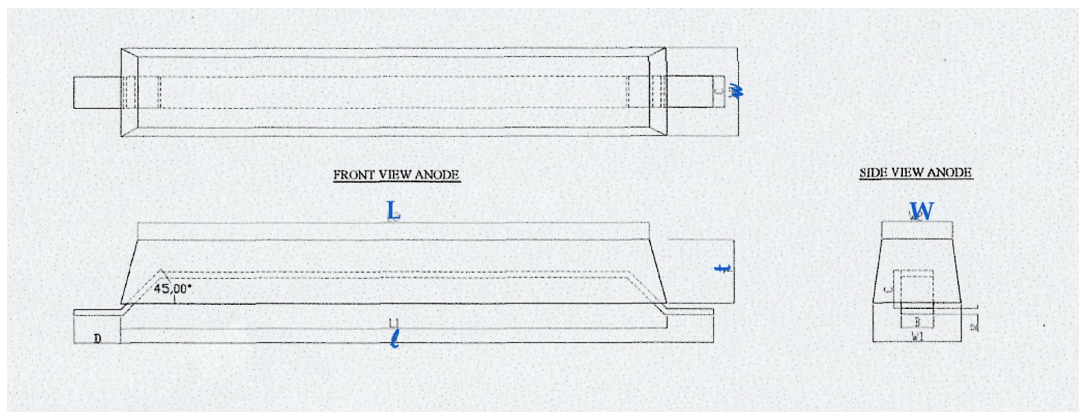
Anode No.	Type No.	A	B	C	Net Weight (kg)
AS9.3	2	321	209	180	9.3
AS24.75	1	320	220	304	24.75
AS30	1	324	222	394	30.0
AS36.3	1	378	276	394	36.3
AS42	1	428	327	394	42.0
AS63	1	425	325	500	63.0
AS82	1	717	613	406	82.0
AS160	1	748	622	525	160.0
AS181	2	688	388	326	181.0



Pipe Insert Anodes

Aluminium Anodes are generally used in salt water, where the resistivity is generally lower. Typical uses include applications such as ship hulls, salt water ballast tanks, offshore structures, steel wharf piling and submerged (offshore) pipelines. Aluminium Anodes conform to the MIL-A-24779 (SH) standard. We can be manufactured with a wide variety of core configurations, to accommodate different anode specifications and applications. All product are tested and inspected prior to shipping.

- ◆ Hull Anodes
- ◆ Tank Anodes
- ◆ Flash Mounted Anodes
- ◆ Segmented Bracelet Anodes
- ◆ Half Shell Bracelet Anodes
- ◆ **Pipe Insert Anodes**
- ◆ Stand-off Anodes



Type	Anodes			Core				Net Weight (kg)	Gross Weight (kg)
	L	W	H	l	w	h	g		
AP36	1320	111	100	150	—	20	—	36	40
AP71	1525	145	130	300	—	25	—	71	81
AP120	1550	180	162	150	—	25	—	120	127
AP148	2440	165	160	150	—	64	—	148	170
AP255	2440	203	203	305	—	64	—	255	290
AP330	2425	255	240	305	—	114	—	330	398
AP434	2740	260	260	305	—	114	—	434	509
AP565	2440	305	305	305	—	114	—	565	633

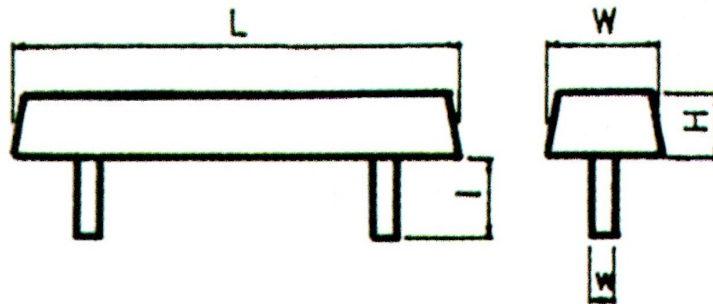


Jln Pulwonokromo 180A, 60243, Surabaya, East Java, Indonesia.
 Telp: (+6231) 828 0939. Fax: (+6231) 828 8629
 Email: nobelindonesia@rocketmail.com
 Website: ptnobelindonesia.com

Stand-off Anodes

Aluminium Anodes are generally used in salt water, where the resistivity is generally lower. Typical uses include applications such as ship hulls, salt water ballast tanks, offshore structures, steel wharf piling and submerged (offshore) pipelines. Aluminium Anodes conform to the MIL-A-24779 (SH) standard. We can be manufactured with a wide variety of core configurations, to accommodate different anode specifications and applications. All product are tested and inspected prior to shipping.

- ◆ Hull Anodes
- ◆ Tank Anodes
- ◆ Flash Mounted Anodes
- ◆ Segmented Bracelet Anodes
- ◆ Half Shell Bracelet Anodes
- ◆ Pipe Insert Anodes
- ◆ Stand-off Anodes



Type	Anodes			Core				Net Weight (kg)	Gross Weight (kg)
	L	W	H	l	w	h	g		
AT330	2425	114	225	240	305	—	—	330	382
AT360	2440	114	274	230	345	—	—	360	415
AT565	3050	114	280	280	305	—	—	565	626
AT49	1875	50	100	98	200	—	—	49	52
AT106	2275	50	178	100	395	—	—	106	123
AT108	700	60	255	240	150	—	—	108	117
AT140	1200	89	215	210	490	—	—	140	166
AT212	1560	114	250	215	305	—	—	212	244
AT216	1500	50	250	220	150	—	—	216	233
AT324	1950	89	288	220	200	—	—	324	349
AT385	2780	114	230	230	305	—	—	385	433

